



ADASAN[®]
ÇEKVALF & YANGIN

**Product
Catalog**



ABOUT US

Ada Avcioğulları ; Our manufacturing journey, which started in Karaköy Gürhan in 1983, in order to combine the needs of the check valve and sanitary ware industry with an innovative and high quality service approach by our founder Mustafa KENDİR, continues to serve with our factory established in Bayrampaşa in 2014 by constantly growing and expanding.

Our wide product range, ranging from valves to fire group products, offers superior solutions in many areas. In addition to our own production, our product diversity is increasing day by day with special collaborations with the world's leading companies.

In order to design and produce the best quality technical installation materials that can be made in Turkey in accordance with the legal requirements, standards and customer demands accepted in the world, and to present them to the domestic/foreign markets in this direction, without sacrificing quality; Our fundamental quality policy is to make our employees adopt ADASAN's principles and goals, by constantly improving them, by taking advantage of the developing technological opportunities, by taking into account the needs of the future and constantly improving the quality management system.

Respectfully

**ADA AVCIOĞULLARI PRES DÖKÜM SU ARM.SAN.VE TİC.LTD.ŞTİ.
"ADASAN ÇEKVALF&YANGIN"**

www.adapres.com | www.yanginvanasi.com

GENERAL SPECIFICATIONS

InCHECK VALVE are types that allow flow in one direction where the fluid passing through the body moves a circular flap with plain surface which may move freely connected to the body with a joint. The rubber-based gasket material used in the flaps of the swing check valves eliminates the risk of leakage due to abrasion caused by friction losses on the gasket seating surface of the metal valve body. Since the fluid valve does not change direction as it passes through body, the flow loss is very low.

Maintenance and repair are quite easy. Swing check valves must be installed in the installation with an inclination of 0-5 ° according to the flow direction

Technical Specifications

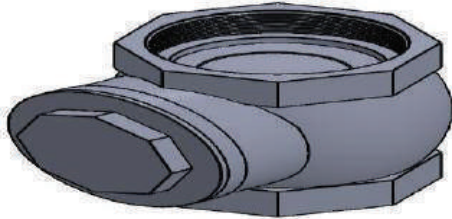
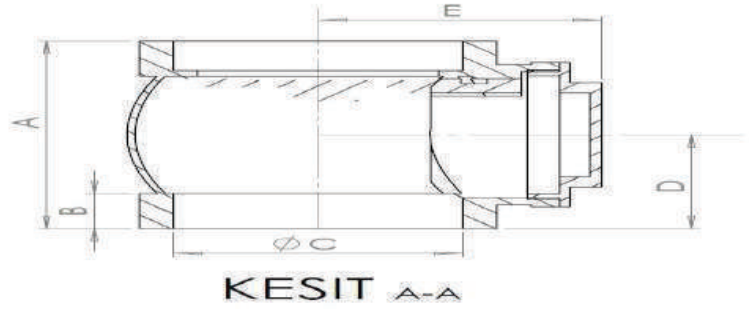
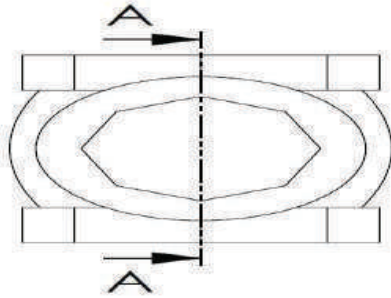
ISO 9001 Quality System Certificate.

Full transition for maximum fluidity.

ISO 228 Female X Female connection.

Broad range of uses in industrial, plumbing and irrigation systems

Temperature -10 ° C + 90 ° C



MATERIAL SPECIFICATIONS

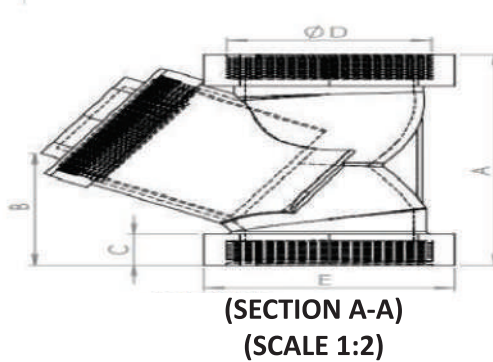
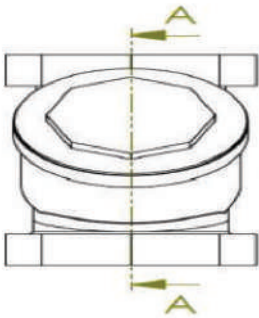
1	Body	MS 58 BRASS (CuZn39Pb2)
2	Tongue	MS 58 BRASS (CuZn39Pb2)
3	Cover	MS 58 BRASS (CuZn39Pb2)
4	Gasket	EPDM

MATERIAL SPECIFICATIONS

LINE NO	NOMINAL SIZE	DN	A	B	C	D	E	WEIGHT (GR)
1	1/2	15	51	12	19	25	30	150
2	3/4	20	57	14	24,5	27	33	192
3	1	25	60	15	30,5	29	39	288
4	1 1/4	32	70	18,5	39,5	35	40	406
5	1 1/2	40	73,5	20	45,5	37	50	593
6	2	50	88	14,5	57	43	60	819
7	2 1/2	65	107	20	72,5	55	70	1436
8	3	80	116	18	85,5	58	77	1717
9	4	100	155	21	110,5	80	95	3722

GENERAL SPECIFICATIONS

Strainers have a wide range of applications to filter out impurities in pipelines. Y type strainer is applied as an indispensable armature for long life and healthy operation of many equipments (e.g. meters, pumps, control valves etc.) in the system. Such strainers are designed to allow easy cleaning and maintenance without disconnecting the line. The filter of the strainers can be removed and cleaned easily.



General Specifications

Operating temperature Range:
-10....+120 C (16 Bar)

Standards

Tests: TS EN 12266 -1

Design: TS EN 11494

Thread Standard: EN ISO 228-1

Applications

Hot and cold water systems, saturated vapour
acid and alkali-free liquid fluids without compressed air

MATERIAL SPECIFICATIONS

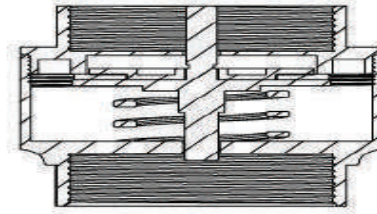
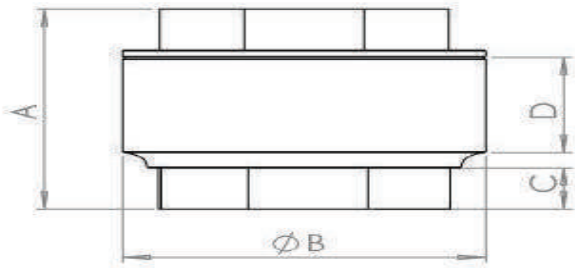
LINE NO	PART NAME	MATERIAL
1	Body	CuZn40Pb2-CW617N Brass
2	Cover	CuZn40Pb2-CW617N Brass
3	Oring	EPDM
4	Filter	X5CRN18 10 - AISI 304 Stainless steel

MATERIAL MEASUREMENTS

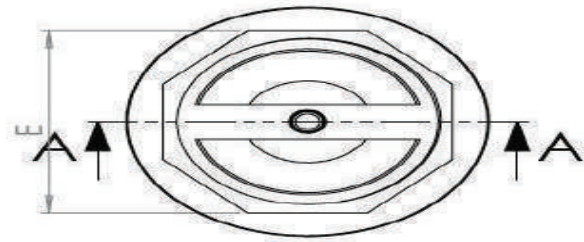
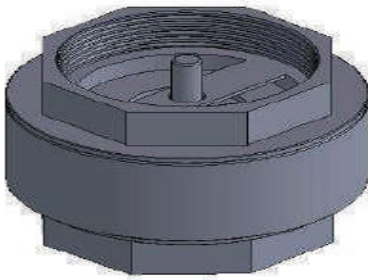
LINE NO	NOMINAL SIZE	DN	A	B	C	D	E	WEIGHT (GR)
1	1/2	15	46	25	11	19	25	103
2	3/4	20	53	30	12	24,5	30	144
3	1	25	65,5	40	13	30	38	241
4	1 1/4	32	83,5	45	19	39,5	47	430
5	1 1/2	40	98	50	19	45,5	53	600
6	2	50	114	60	20	52	66	985
7	2 1/2	65	142,5	75	20	72,5	82	1598
8	3	80	155,5	80	24	85	95	2196
9	4	100	194	110	27	110,5	122	3843

GENERAL SPECIFICATIONS

ISO 9001 Quality System Certificate.
Full transition for maximum fluidity.
ISO 228 Female X Female connection.
Broad range of uses in industrial, plumbing and irrigation systems
Temperature -10 ° C + 90 ° C



(SECTION A-A)
(SCALE 1:2.5)

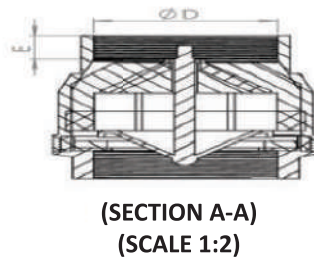
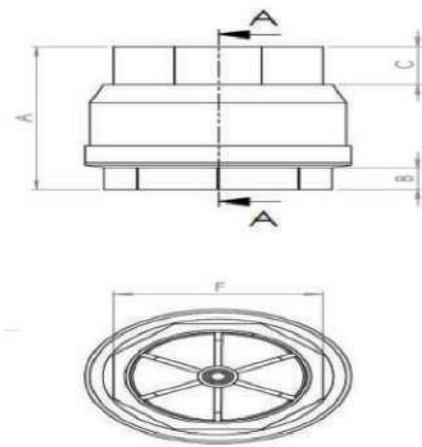


LINE NO	NOMINAL SIZE	DN	A	B	C	D	E	WEIGHT (GR)
1	1/2	15	48,5	34	13	20	26	123
2	3/4	20	52	41	13	20	30	149
3	1	25	58	47	15	22	37	209
4	1 1/4	32	61,5	57,5	15	25	46,5	280
5	1 1/2	40	68	65,5	17	25	52	378
6	2	50	72	79,5	17	30	65	580
7	2 1/2	65	97	101	18	50	82	1216
8	3	80	100	118	20	50	94	1672
9	4	100	115	151	22	65	122	3820

GENERAL SPECIFICATIONS

Check valves are general purpose fittings; and may be used for liquids and gases. They increase operational safety; and, as the case may require, they may replace complicated fixtures. The use of Spring Check Valve is very advantageous due to its short installation time and space saving.

The working part of the check valves is a hinged disc. This disk can move freely on the hinge pin in one direction. It works automatically with fluid movement. As the fluid flows in one direction, the disc opens to allow the fluid to pass. If flowing in the opposite direction, the disc closes. Thus, the flow on the line on which the check valve is attached is unidirectional. Spring Check Valves can be installed in any position.



General Specifications

Operating Temperature Range:
-10....+110 C (16 Bar)

Standards Tests : TS EN 12266 -1

Design : TS EN 10873

Thread Standard: EN ISO 228-1

Applications

Hot and cold water systems,
alkali-free liquid fluids without compressed air

MATERIAL SPECIFICATIONS

LINE NO	PART NAME	MATERIAL
1	BODY	CuZn40Pb2-CW617N Brass
2	COVER	CuZn40Pb2-CW617N Brass
3	Valve	Polymer Plastic
4	Gasket	NBR
5	Spring	X12VRNi 18 8 AISI 302 Stainless steel

MATERIAL MEASUREMENTS

LINE NO	NOMINAL SIZE	A	B	C	D	E	F	WEIGHT (GR)
1	1/2	47	9	13,5	19	12	25	94
2	3/4	53	9	16,5	24	13	30	133
3	1	61,5	11,5	20	30,5	15	38	229
4	1 1/4	67	12	18,5	39	15	46	354
5	1 1/2	80	13	24	45	18	54	528
6	2	82	15	24	57,5	18	65	639
7	2 1/2	111	16	30	72,5	21	82	1405
8	3	133	19	35	85	25	97	2290

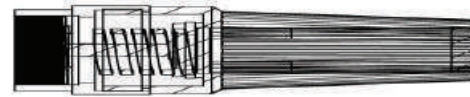
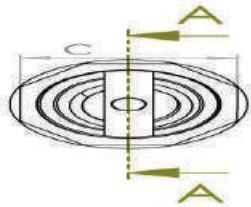
GENERAL SPECIFICATIONS

ISO 9001 Quality System Certificate.
Full transition for maximum fluidity.
ISO 228 Female X Female connection.
EPDM O-ring for maximum safety.
Broad range of uses in industrial, well, anchorage,
plumbing and irrigation systems
Temperature -10 ° C + 50 ° C

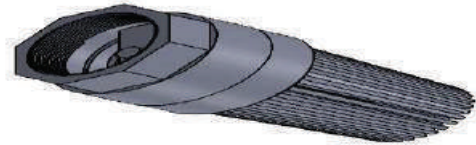
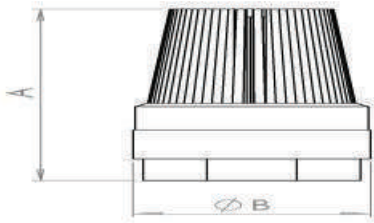


MATERIAL SPECIFICATIONS

1	Upper Body	MS 58 BRASS (CuZn39Pb2)
2	Lower Body	Ployproben (plastic)
3	Valve	Derlin
4	Gasket	EPDM
5	Spring	Stainless Steel



(SECTION A-A)



MATERIAL MEASUREMENTS

LINE NO	NOMINAL SIZE	DN	A	B	C	WEIGHT (GR)
1	3/4	20	76	34,5	30	70
2	1	25	85	41	38	95
3	1 1/4	32	98	49	46	160
4	1 1/2	40	112	56,5	53	214
5	2	50	116,5	72,5	65	342
6	2 1/2	65	133	88	83	593
7	3	80	148	104,5	97	783
8	4	100	168	142,5	120	1186

GENERAL SPECIFICATIONS

ISO 9001 Quality System Certificate.

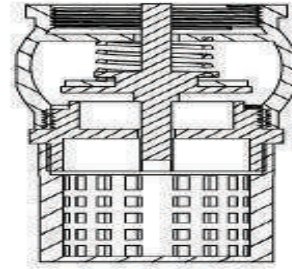
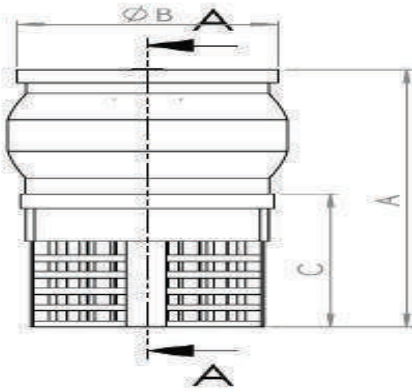
Full transition for maximum fluidity.

ISO 228 Female X Female connection.

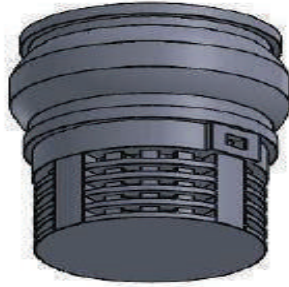
EPDM O-ring for maximum safety.

Broad range of uses in industrial, plumbing and irrigation systems

Temperature -10 ° C + 50 ° C



(SECTION A-A)



LINE NO	NOMINAL SIZE	DN	A	B	C	WEIGHT (GR)
1	1 1/4	32	114	50	64	235
2	1 1/2	40	118	57,5	66	305
3	2	50	140	70	74	484
4	2 1/2	65	187	88,5	102,5	775
5	3	80	202	102,5	117,5	1055
6	4	100	241	125	135	1532

GENERAL SPECIFICATIONS

ISO 9001 Quality System Certificate.

Full transition for maximum fluidity.

ISO 228 Female X Female connection.

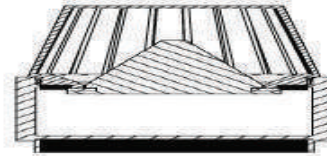
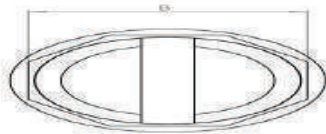
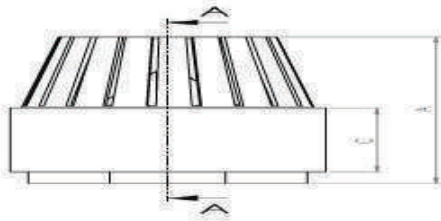
EPDM O-ring for maximum safety.

Broad range of uses in industrial, plumbing and irrigation systems

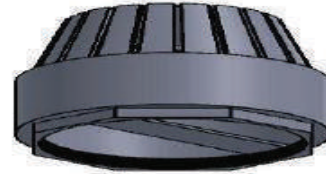
Temperature -10 ° C + 50 ° C



MATERIAL SPECIFICATIONS		
1	Upper Body	MS 58 BRASS (CuZn39Pb2)
2	Lower Body	MS 58 BRASS (CuZn39Pb2)
3	Valve	MS 58 BRASS (CuZn39Pb2)
4	Gasket	EPDM



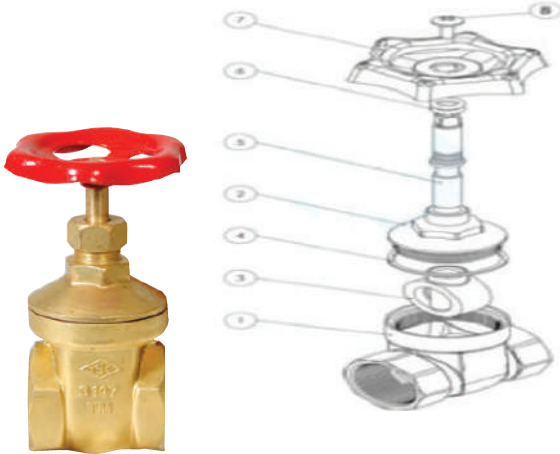
(SECTION A-A)
(SCALE 1:2)



LINE NO	NOMINAL SIZE	DN	A	B	C	WEIGHT (GR)
1	3/4	20	73,5	31	34	154
2	1	25	80	37	37	197
3	1 1/4	32	86	46	38	258
4	1 1/2	40	94	53	42	345
5	2	50	104	65	44	601
6	2 1/2	65	123,5	83	51,5	979
7	3	80	132	97	57,5	1360
8	4	100	184	129	95	2848

General Specifications

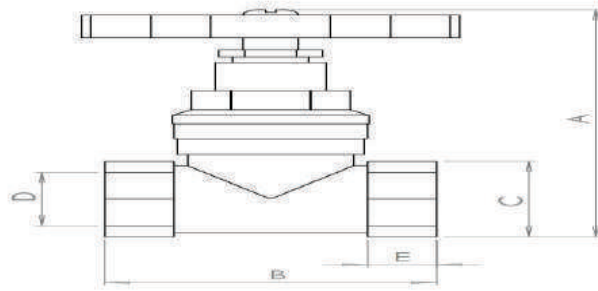
The opening-closing operation is achieved by rotating the sliding gate of a conical section perpendicular to the direction of flow up and down by means of a screw shaft and flywheel. Gatevalves open counterclockwise and close clockwise. It is designed to give full path to or close the fluid passing through it. Any use otherwise will cause the disc to vibrate. In addition, since these valves seal metal to metal with full fitting of the conical cross section of the valve body having the same cross section, in case of use in half open positions, the valve surface may be subject to risk of abrasion by the fluid over time. Therefore, it is not recommended to use as a throttle valve. In the fully open position, the tube is virtually no-loss valve as it gives the same or more fluid cross-sectional area as the inner diameter. Since the valve does not move against the fluid pressure during opening and closing, there is no difficulty in turning the flywheel. Since the opening of the valve is slow, they do not cause water (hammer) impacts in high pressure installations. Due to its narrow body, it may be used in narrow spaces. There is no arrow on the valve body indicating the flow direction. The input and output may be positioned at any side.



PART NO	PART NAME	MATERIAL	PIECE
1	BODY	MS 58 BRASS	1
2	COVER	MS 58 BRASS	1
3	TONGUE	MS 58 BRASS	1
4	CONTA	PTFE	1
5	MILL	MS 58 BRASS	1
6	O-RING	EP DM	2
7	VOLAN	MS 58 BRASS	1
8	SCREW	STEEL 1050	1

Technical Specifications

- In accordance with TS EN 12288
- Operating Pressure: 16 bar
- Max Operating temperature: 90 °C



Areas of Use

It is used for fluid circulation such as non-acidic water, air, petroleum products, alcohol circuits, and alcohol. Avoid using it for flammable combustible gas circuits like oxygen.

GATE VALVE MEASUREMENTS

LINE NO	NOMINAL SIZE	DN	A	B	C	D	E
1	1/2	15	82	49	25	19	11
2	3/4	20	90	52	30	24,5	11
3	1	25	105	61	38	30,5	13
4	1/4	32	136	60	49	39	14
5	1/2	40	147	71,5	55	45,5	17
6	2	50	170	70	65	57	15

GENERAL SPECIFICATIONS

In ball valves, the primary element is a ball with a hole in the middle. It will be switched to full close position from the fully open position by rotation of 90 ° of this ball. Ball valves are used for the applications requiring very quick opening and closing.

Advantages: low pressure losses, easy opening and closing, good sealing, light weight and small application area.

Sealing consists of two stages as sealing of ball, and shaft sealing.

Natural Gas Ball Valves are brass body ball valves designed for natural gas installations, complying with TSE standards.

General Specifications

Operating temperature Range

* -10120 degree (25 Bar)

Certificate

Design

TS EN 13547

Thread Standard

EN ISO 228-1

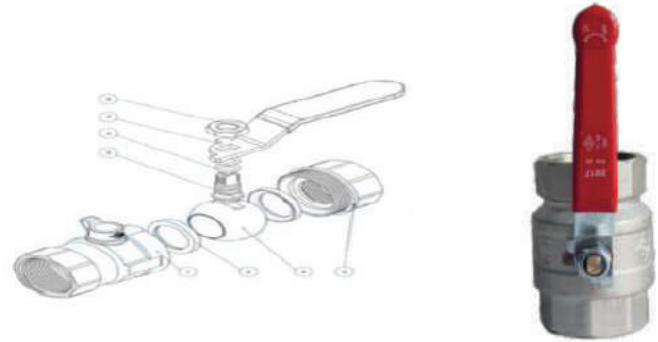
Tests

TS EN 12226-1

Applications

Hot and cold water systems,

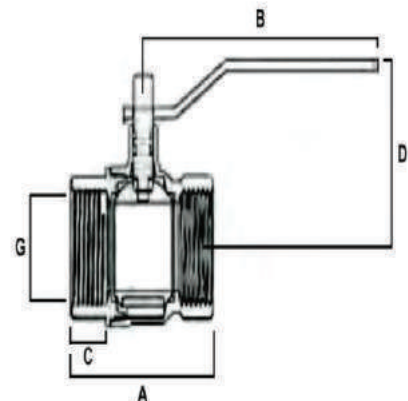
alkali-free liquid fluids without
compressed air



MATERIAL SPECIFICATIONS	PART NO	PART NAME	MATERIAL	PIECE
	1	BODY	CuZn40 P b2-CW617N Forged brass	1
	2	COVER	CuZn40 P b2-CW617N Forged brass	1
	3	TEFLON	PTFE	2
	4	BALL	CuZn40 P b2-CW617N Forged brass Chrome plated	1
	5	MILL	CuZn40 Pb2-CW617N Brass	1
	6	O-RING	EP DM	2
	7	HANDLE	ST37-Steel+Galvaniz+Vinyl Coating	1
	8	NUT	C1050	1

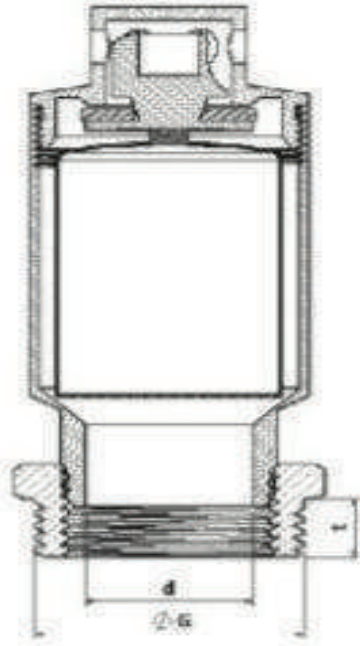
BALL VALVE MEASUREMENT TABLE

LINE NO	NOMINAL SIZE	DN	A	B	C	D	G	WEIGHT (GR)	NOMINAL PRESSURE
1	1/2	15	53,5	97	13	38	19	198	25
2	3/4	20	63	97	13	38	24,5	283	25
3	1	25	77	114	17	47	30,5	487	25
4	1/4	32	87,5	114	21,5	52	39,5	746	25
5	1/2	40	102	123	19	65	45,5	1036	25
6	2	50	111	145	24,5	70	57	1361	25
7	2 1/2	65	135	207	31	95	72,5	2073	25
8	3	80	163	235	35	108	85,5	2983	25



General Specifications

ISO 9001 Quality System Certificate.
ISO 228 Female X Female connection.
Temperature -10 ° C + 50 ° C



MATERIAL SPECIFICATIONS		
Line No	Part Name	Material
1	Body	CuZn39Pb2- MS 58 Brass
2	Valve	CuZn39Pb2- MS 58 Brass
3	Cover	CuZn39Pb2- MS 58 Brass

MATERIAL SPECIFICATIONS				
Line No	NOMINAL SIZE	d	G	L
1	1	22	25	105
2	1 1/4	28	32	110
3	1 1/2	36	40	110
4	2	46	50	110

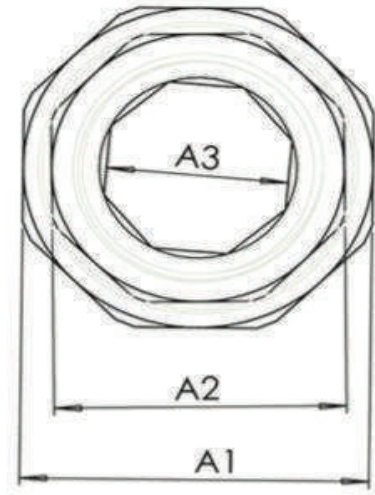
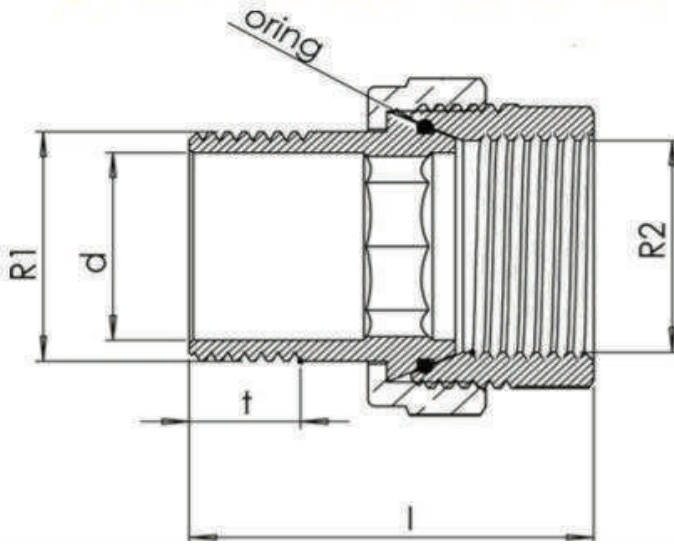
GENERAL SPECIFICATIONS

ISO 9001 Quality System Certificate.

ISO 228 Female X Female connection.

Broad range of uses in industrial, plumbing and irrigation systems

Temperature -10 ° C + 120°C



MATERIAL MEASUREMENTS

LINE NO	NOMINAL SIZE	l	t	d	A1	A2	A3	ORING
1	1 / 2	46	13	16	30	26	12	15X3
2	3 / 4	55	16	20	37	34	18	20X2
3	1	53	16	27	46	38	23	28X2
4	1 1 / 4	68	17	35	53	47	30	30X2
5	1 1 / 2	73	18	39	66	55	38	-
6	2	89	19	51	81	66	48	-

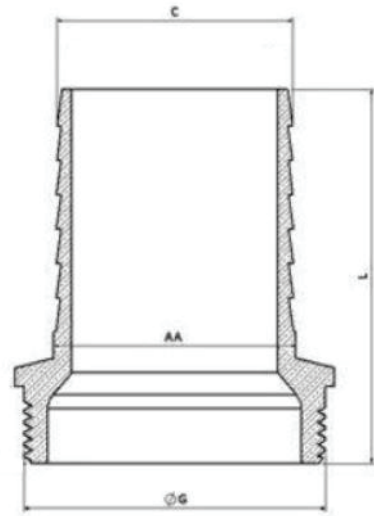
MATERIAL SPECIFICATIONS

Line No	Part name	Material
1	Body	CuZn40Pb2- CW617N - Forged brass



MATERIAL MEASUREMENTS

Line No	NOMINAL SIZE (G)	C	AA	L
1	1/2	16	19	36
2	3/4	20	22	41
3	1	26	30	45
4	1 1/4	32	33	51
5	1 1/2	38	43	57
6	2	51	55	64
7	2 1/2	63	70	76
8	3	76	82	82
9	4	101	111	100



General Specifications

Working Temperature $-10^{\circ}\text{C} + 120^{\circ}\text{C}$

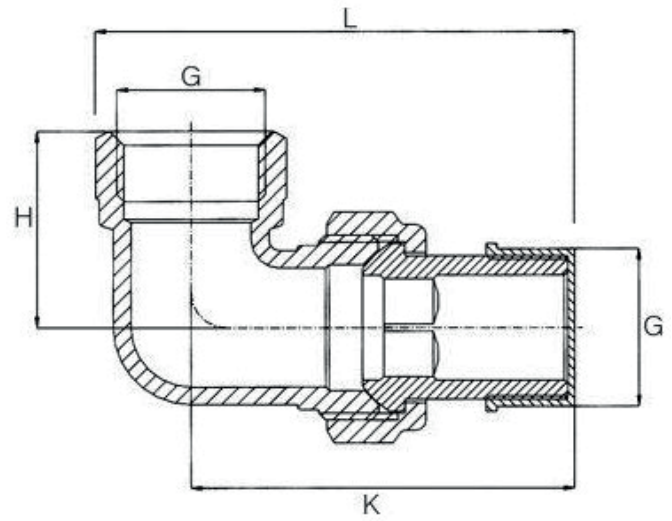
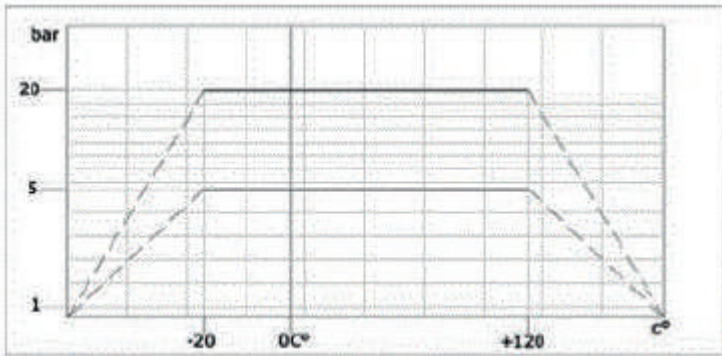
Standards

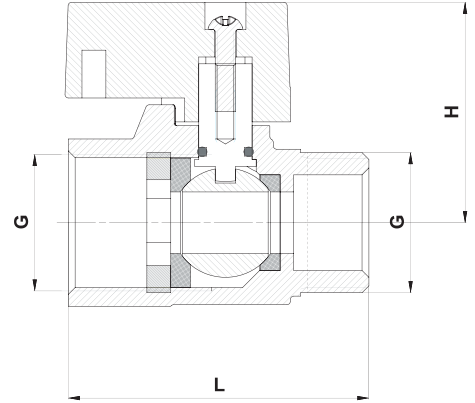
Thread Standard : EN ISO 228-1

Tests : TS EN 12266-1

Applications

Hot and cold water systems





General Specifications

Working Temperature : -10....+80 °C

Standards

Thread Standard : EN ISO 228-1

Tests : TS EN 12266-1

Applications

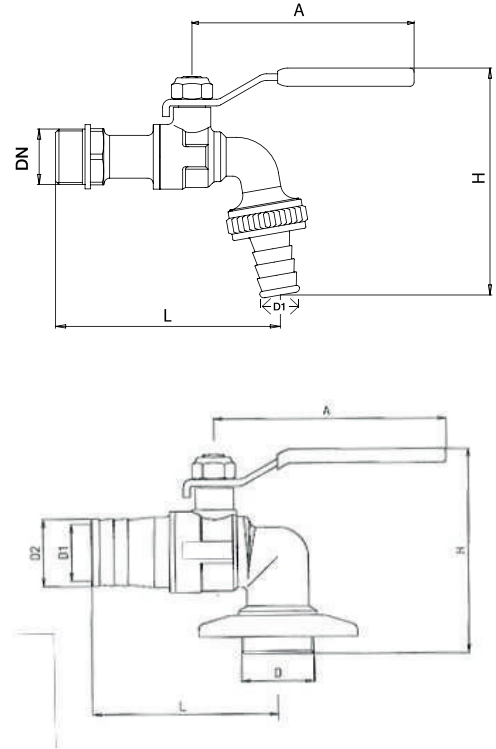
Hot and cold water systems

Material Specifications

Part Name	Material	
Body	CuZn40Pb2 - CW617N	Brass+Ni Coated
Bonnet	CuZn40Pb2 - CW617N	Brass+Ni Coated
Ball	CuZn40Pb2 - CW617N	Brass+Ni/Cr Coated
Stem	CuZn39Pb3- CW614N	Brass
Lever	Aluminum - Plastic	
Seals	PTFE - Teflon	
O-Ring	EPDM - NBR	

Dimensions	Pressure	10 Bar					
	Nominal Diameter (Dn)		Dn6	Dn8	Dn10	Dn15	Dn20
		G	1 / 8"	1/4"	3 / 8"	1/2"	3/4"
	Valve Dimensions	L	38	38	38	44	51
		H	27	27,5	28	30	34
	Weight (kg)		0,045	0,046	0,050	0,085	0,135

GARDEN BIBCOCK WATER TAP AND BALL VALVE WITH HOSE CONNECTION



General Specifications (PN10)

Working Temperature: -10....+80 °C

Standards

Thread Standard : EN ISO 228-1

Tests : TS EN 12266-1

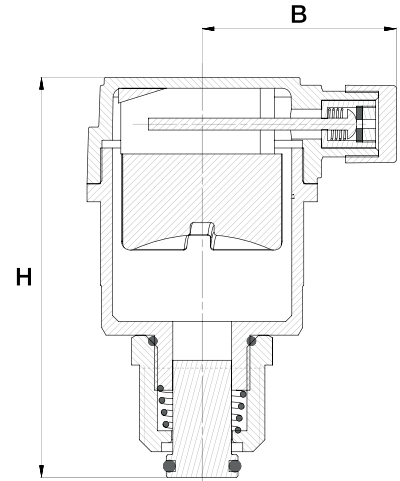
Applications

Hot and cold water systems

Malzeme Özellikleri / Material Specifications

Part Name	Malzeme / Material
Body	CuZn40Pb2 - CW617N Brass
Bonnet	CuZn40Pb2 - CW617N Brass
Nut	CuZn40Pb2 - CW617N Brass
Hose End	CuZn40Pb2 - CW617N Brass
Lever	ST 37 Galvanized Steel
Gasket	EPDM - NBR
Stem	CuZn39Pb3 - CW614N Brass
O-Ring	EPDM - NBR

Dimensions	Ball Valve With Hose Connection			Garden Water Tap	
	Nominal Diameter (Dn)	Dn20	Dn20 (Union)	Dn15	Dn20
Valve Dimensions	A	80	80	80	80
	D1	1/2"	-	14,7	19
	D2	25	-	-	-
	H	74	74	82	83
	L	62	75	91	92
	Nut	-	3/4"	-	-
Weight (kg)		0,225	0,260	0,210	0,220



General Specifications

Working Temperature : -10....+90 °C

Standards

Thread Standard : EN ISO 228-1

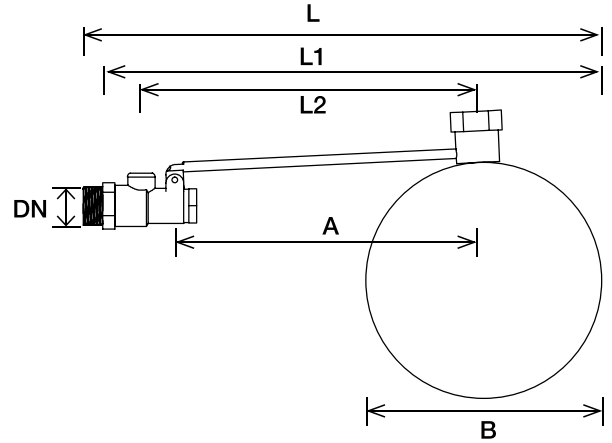
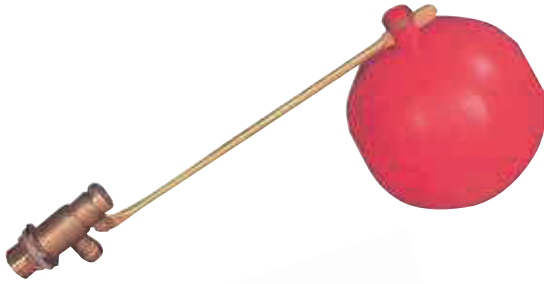
Tests : TS EN 12266-1

Applications

Hot and cold water systems

Material Specifications	Part Name	Material
	Body	CuZn40Pb2 - CW617N P Brass
	Bonnet	CuZn40Pb2 - CW617N Brass
	Check Valve	CuZn39Pb3 - CW614N Brass
	Safety Valve	Ebonite
	Float	Ebonite

Dimensions	Pressure	10 Bar	
	Nominal Diameter (Dn)	Dn15	
		G	1/2"
	Valve Dimensions	H	68
		B	33
	Weight (kg)	0,155	



General Specifications

Working Temperature : -10....+90 °C

Standards

Thread Standard : EN ISO 228-1

Tests : TS EN 12266-1

Applications

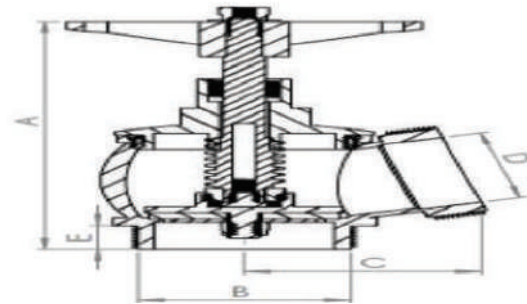
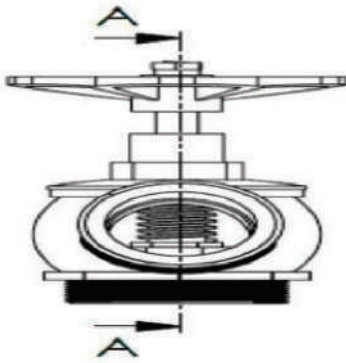
Hot and cold water systems

/ Material Specifications	Part Name	Material
	Body	CuZn40Pb2 - CW617N Brass
	Bonnet	CuZn39Pb3 - CW614N Brass
	Ball	Plastic - Ebonite
	Rod	CuZn39Pb3 - CW614N Brass
	Gasket	Plastic

Dimensions	Pressure	16 Bar							
	Nominal Diameter (Dn)		Dn10	Dn15	Dn20	Dn25	Dn32	Dn40	Dn50
		DN	3/8"	1/2"	3/4"	1"	1 1/4"	1 1/2"	2"
	Valve Dimensions	A	160	160	160	160	200	200	200
		L	258	283	285	288	390	400	400
		L1	240	265	265	265	360	360	360
		L2	185	185	185	185	245	245	245
		B	93	120	120	120	190	190	190
	Weight (kg)		0,170	0,230	0,245	0,295	0,675	0,845	0,880

General Specifications

- Applicable standards: TS 12259, TS 12258
- Operating pressure: 16 bar
- Maximum operating temperature: +80°C



(SECTION A-A)

LINE NO	TYPE	NOMINAL SIZE	DN	A	B	C	D	E	WEIGHT (GR)
1	TSE	1 1/2	40	114	47,5	69	39,5	13,5	626
2	SLIGHT	2	50	150	59	82	49,5	15	1429
3	TSE	2	50	150	59,5	82	47	16	1572
4	ITALIAN	1 1/2	40	138	59	75,5	37,5	13	1040
5	TSE	2 1/2	65	185	75	99	66	17	1913
6	INNER THREADED	2	50	150	57	82	49,5	20	1518

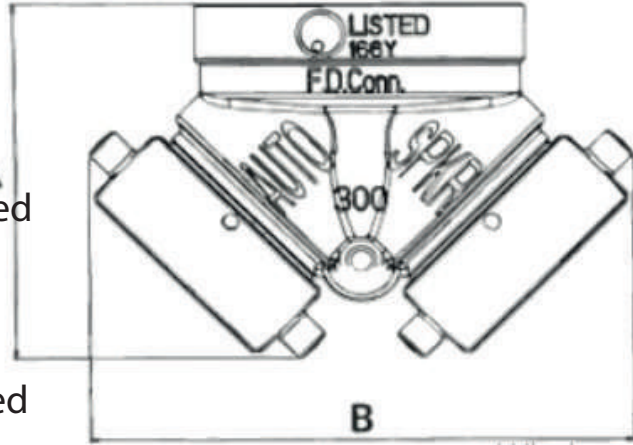


The fire-fighting link entry price, which is installed to ensure that fire crews can transfer water in a convenient way, where there are reservoirs and water resources, is positively affected by our company's attractive price policy is one of the most satisfied ones of our customers.

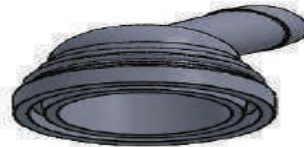
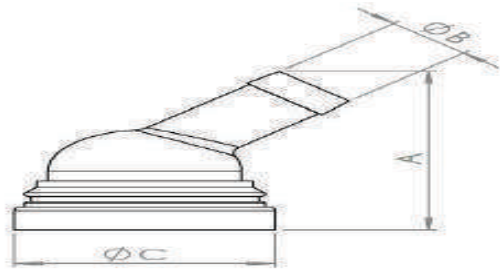
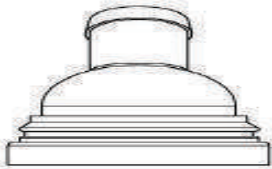
Fire-fighting storey connection valve

The fire-fighting storey connection valve, which is used in fixed installations, is a very useful valve that allows the quenching teams to transfer water quickly. The fire-fighting storey connection valve, which can be installed in both wet and dry piping systems, is located at the end of the connection valves. It also saves time by opening and closing the valve, making it easier to make the hose connection. The benefit is unquestionable given the fact that it has been competing over time in fire situations.

It facilitates the work of professional extinguishing teams by keeping hose records and covers in the unit. In the regulation on protection of buildings from fire; it is clearly stated that it must be kept at the property buildings.

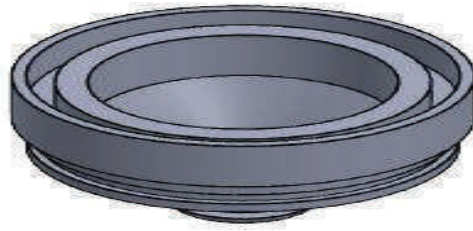
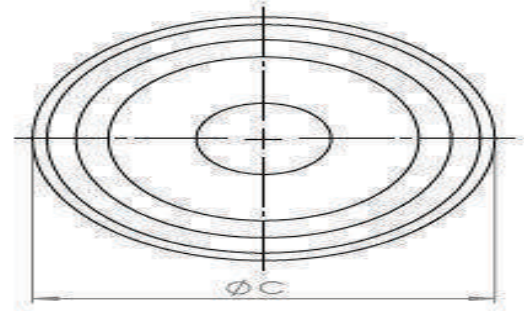
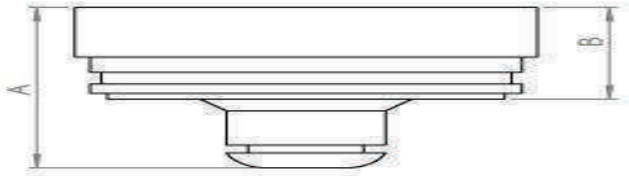


Maximum operating bar pressure is 24 bars.



LINE NO	NOMINAL SIZE	DN	A	B	C	WEIGHT (GR)
1	2	50	97	26	64,5	170

Maximum operating bar pressure is 24 bars.

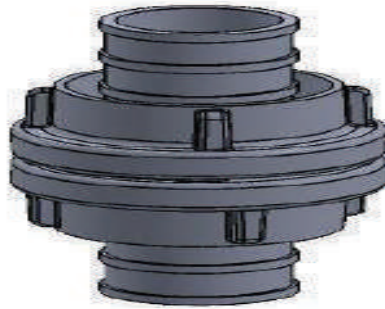
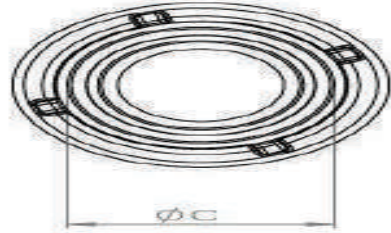
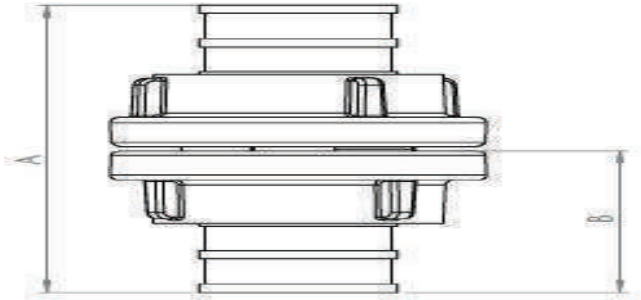


LINE NO	NOMINAL SIZE	DN	A	B	C	WEIGHT (GR)
1	2	50	38	25	64,5	105
2	2 1/2	65	40	23,5	87,5	164
3	3	80	40	23,5	87,5	164
4	4	100	55	30	131	420

General Specifications

Connection Types: 1" 1/31 - 1 1/2" 51 - 2" /66 - 2
 1/2"66 2 1/2"89 - 2 3/4" 89 - 2 1/2" 89 - 4" /133

Maximum operating bar pressure is 24 bars.

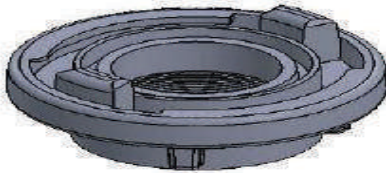
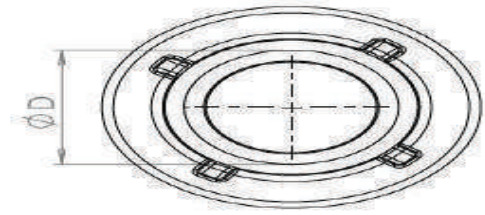
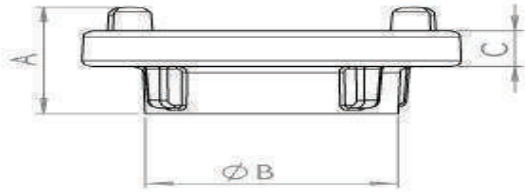


LINE NO	TYPE	NOMINAL SIZE	DN	A	B	C	WEIGHT (GR)
1	40	1 1/2	32	187	95	70	745
2	52	2	50	186	95	70	775
3	65	2 1/2	65	252	125	125	1338
4	70		65	254	125	125	1380
5	75		65	250	123	125	1448
6	100	4	100	340	170	182	2937

General Specifications

Connection Types: 1" 1/31 - 1 1/2" 51 - 2" /66 - 2 1/2" 66 2
1/2" 89 - 2 3/4" 89 - 2 1/2" 89 - 4" /133

Maximum operating bar pressure is 24 bars.



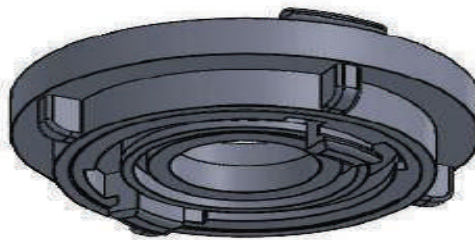
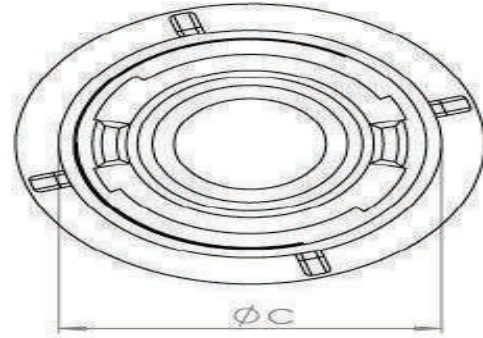
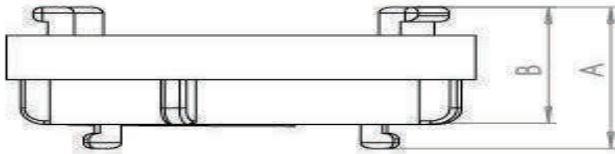
MATERIAL MEASUREMENTS

LINE NO	NOMINAL SIZE	DN	A	B	C	D	WEIGHT (GR)
1	1 1/2	40	49,5	53,5	18,5	45,5	299
2	2	50	48,5	67	18,5	57	272
3	2 - 2 1/2	50	46,5	80,5	17,5	72,5	262
4	2 1/2 - 2	50	51	68	18,5	57,5	448
5	2 1/2	65	49	81	18,5	72,5	398
6	3	80	55	102	18,5	85,5	504
7	4	100	60,5	125	22	110,5	1028

General Specifications

Connection Types: 1" 1/31 - 11/2" 51 - 2" /66 - 2 1/2"66
 2 1/2"89 - 2 3/4" 89 - 2 1/2" 89 - 4" /133

Maximum operating bar pressure is 24 bars.

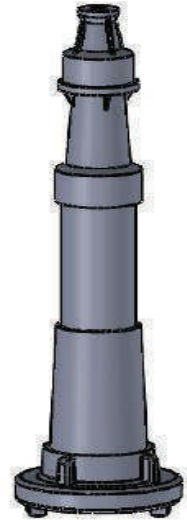
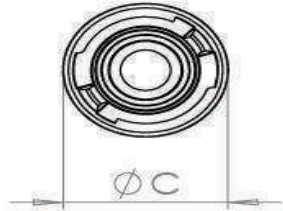
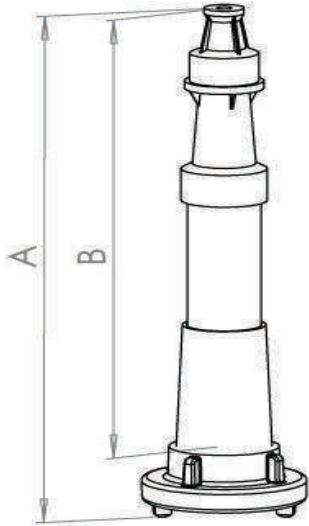


LINE NO	NOMINAL SIZE	DN	A	B	C	WEIGHT (GR)
1	2	50	62	51	102	613

Specifications

Connection Types: 65 1 -1/2, 85 2", 110 2- 1/2"

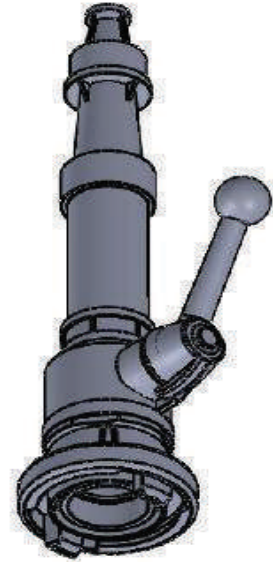
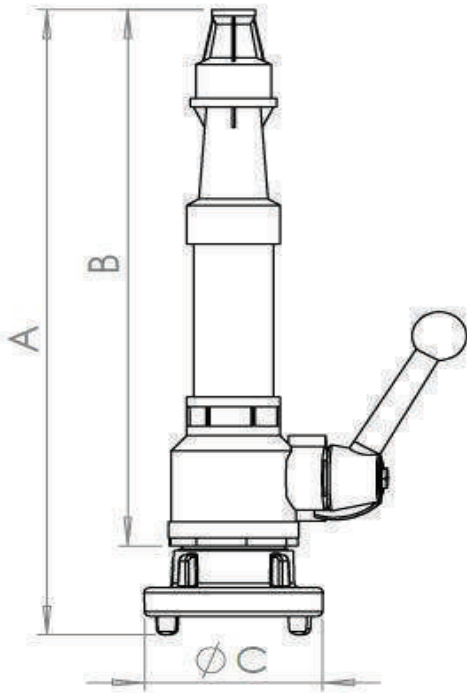
It is a fire water lance used in fire hoses and capable of firing straight. It has high strength and corrosion resistance. Made of Aluminum Injection. Straight shot lances have German storz type connections. It is one of the types used by the fire brigade with cloth hose. It has connections of different sizes.



LINE NO	NOMINAL SIZE	DN	A	B	C	WEIGHT (GR)
1	2	50	385	335	97	904

Specifications

Connection Types: 65 1-1/2", 85 2", 110 2- 1/2"
 Guided lance has German storz type connection.
 Made with aluminum injection. It is one of the types used by the fire brigade with cloth hose.
 It has connections of different sizes. This lance type has three levels as closed position, straight position and spray pulverized pulse position.

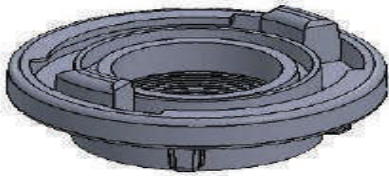
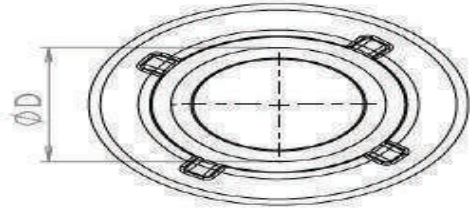
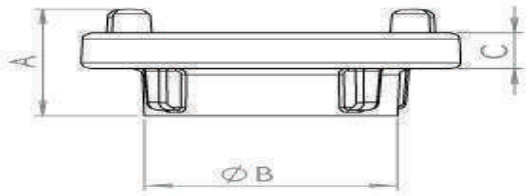


LINE NO	NOMINAL SIZE	DN	A	B	C	WEIGHT (GR)
1	2	50	380	325	97	1477

General Specifications

Connection Types: 1" 1/31 - 1 1/2" 51 - 2" /66 - 2
 1/2"66 2 1/2"89 - 2 3/4" 89 - 2 1/2" 89 - 4" /133

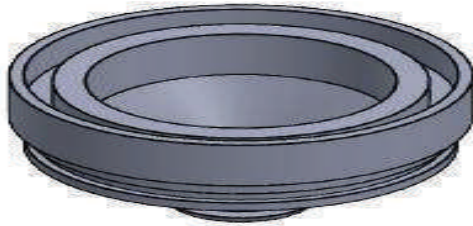
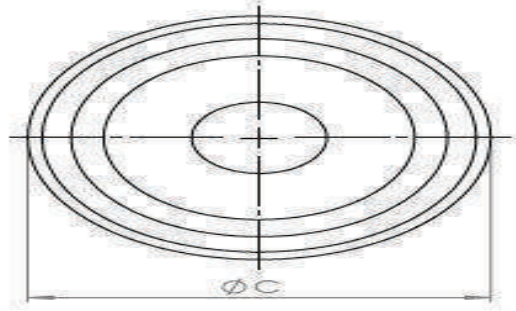
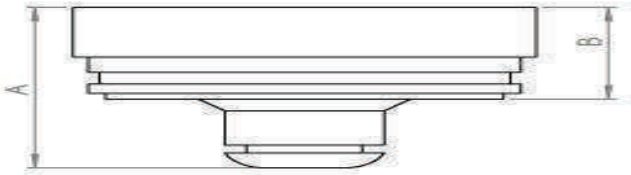
Maximum operating bar pressure is 24 bars.



MATERIAL MEASUREMENTS

LINE NO	NOMINAL SIZE	DN	A	B	C	D
1	1 1/2	40	49,5	53,5	18,5	45,5
2	2	50	48,5	67	18,5	57
3	2 - 2 1/2	50	46,5	80,5	17,5	72,5
4	2 1/2 - 2	50	51	68	18,5	57,5
5	2 1/2	65	49	81	18,5	72,5
6	3	80	55	102	18,5	85,5
7	4	100	60,5	125	22	110,5

Maximum operating bar pressure is 24 bars.

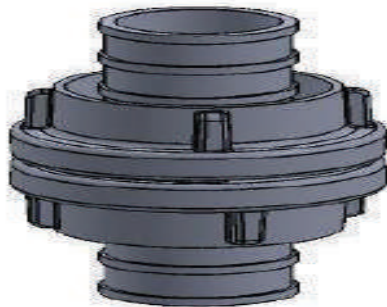
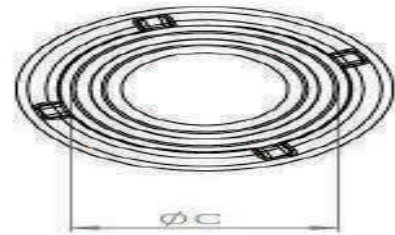
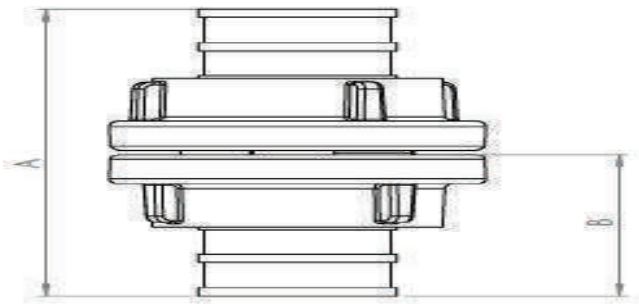


LINE NO	NOMINAL SIZE	DN	A	B	C
1	2	50	38	25	64,5
2	2 1/2	65	40	23,5	87,5
3	3	80	40	23,5	87,5
4	4	100	55	30	131

General Specifications

Connection Types: 1" 1/31 - 1 1/2" 51 - 2" /66 - 2
1/2"66 2 1/2"89 - 2 3/4" 89 - 2 1/2" 89 - 4" /133

Maximum operating bar pressure is 24 bars.



LINE NO	TYPE	NOMINAL SIZE	DN	A	B	C
1	40	1 1/2	32	187	95	70
2	52	2	50	186	95	70
3	65	2 1/2	65	252	125	125
4	70		65	254	125	125
5	75		65	250	123	125
6	100	4	100	340	170	182

Standard Response

Specifications

- All Hazards
- 5 mm bulb

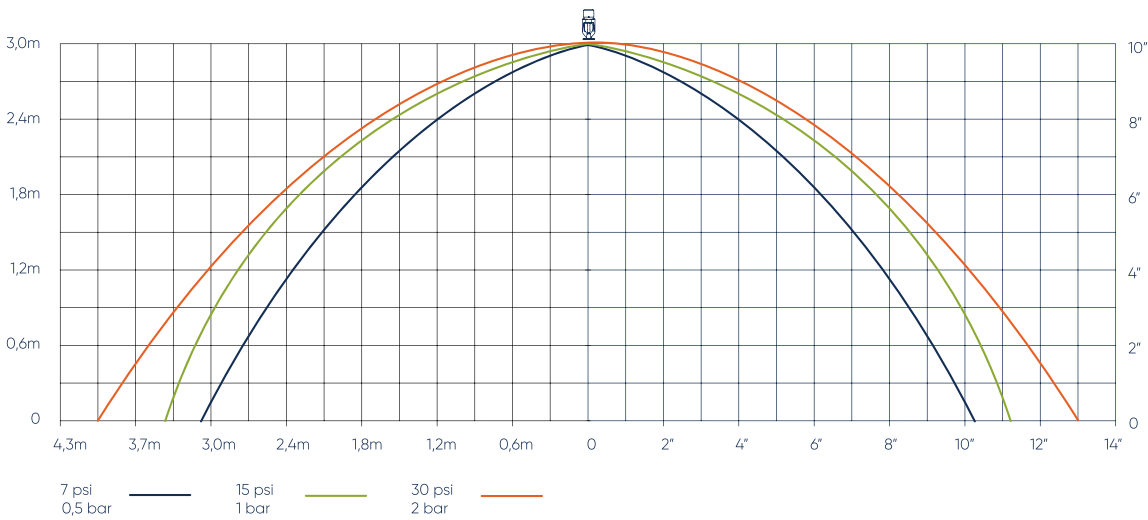
Usage areas

- House
- Hotel
- Hospital
- Mall
- Dormitory
- Trade Center



They are preferred in suspended ceilings or in locations where downward sprinklers are appropriate. Water sprays in a conically expansion. They can be used with escutcheons.

K Factor	K5.6(80), K8.0(115)
Thread size	½" NPT (15 mm), ¾" NPT (20 mm)
Response	Standard Response
Finishes	Brass, Chrome, White
Temperature	57°C(135°F), 68°C(155°F), 79°C(175°F), 93°C(200°F), 141°C(286°F)



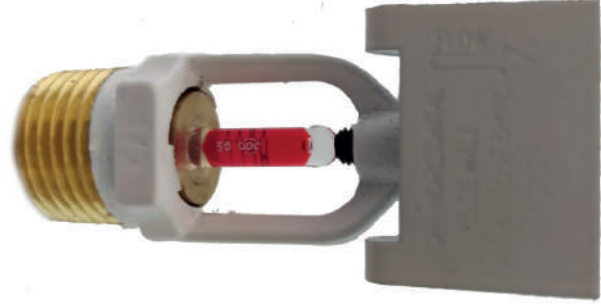
Standard Response

Specifications

- All Hazards
- 5 mm bulb

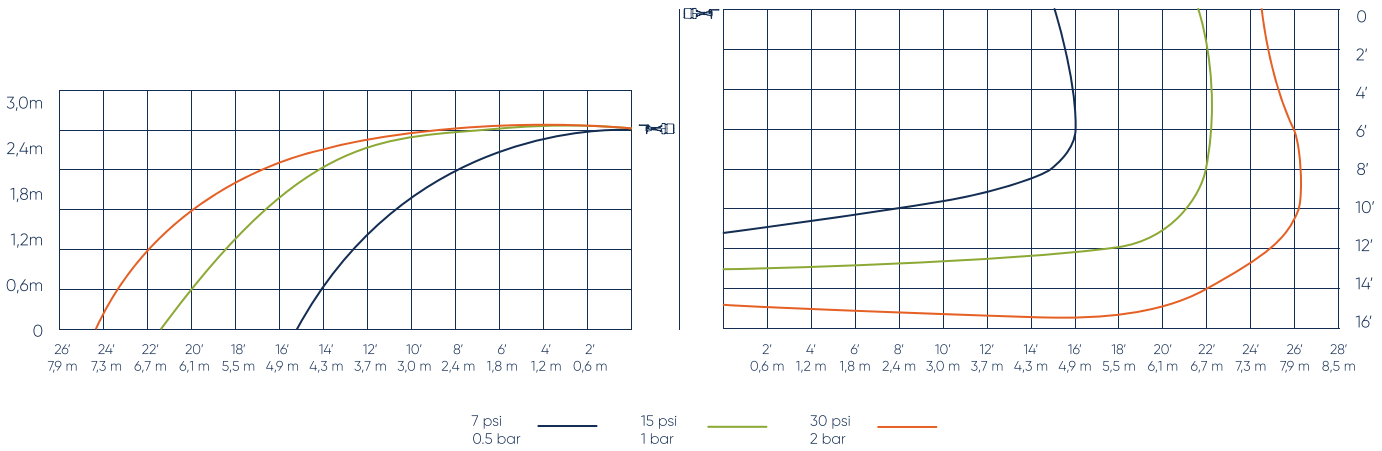
Usage areas

- House
- Hotel
- Hospital
- Mall
- Dormitory
- Trade Center



They are preferred in suspended ceilings or in locations where downward sprinklers are appropriate. Water sprays in a conically expansion. They can be used with escutcheons.

K Factor	K5.6(80), K8.0(115)
Thread size	½" NPT (15 mm), ¾" NPT (20 mm)
Response	Standard Response
Finishes	Brass, Chrome, White
Temperature	57°C(135°F), 68°C(155°F), 79°C(175°F), 93°C(200°F), 141°C(286°F)



Standard Response

Specifications

- All Hazards
- 5 mm bulb

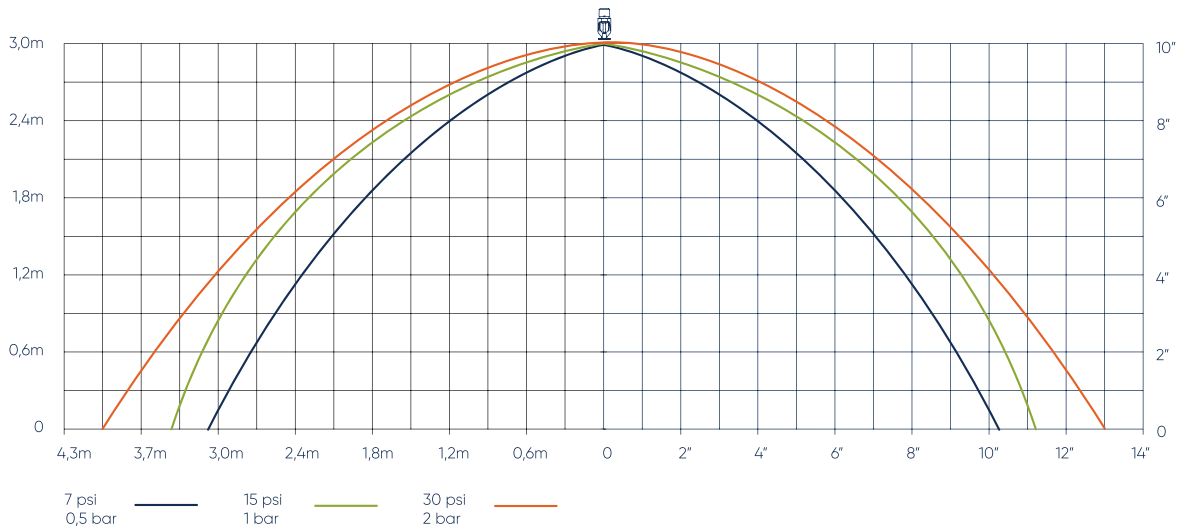
Usage areas

- House
- Hotel
- Hospital
- Autopark
- Mall
- Dormitory
- Trade Center



They are preferred in suspended ceilings or in locations where downward sprinklers are appropriate. Water sprays in a conically expansion. They can be used with escutcheons.

K Factor	K5.6(80), K8.0(115)
Thread size	½" NPT (15 mm), ¾" NPT (20 mm)
Response	Standard Response
Finishes	Brass, Chrome, White
Temperature	57°C(135°F), 68°C(155°F), 79°C(175°F), 93°C(200°F), 141°C(286°F)





SPRINK INSTALLATION KEY



SPRINK FRAME



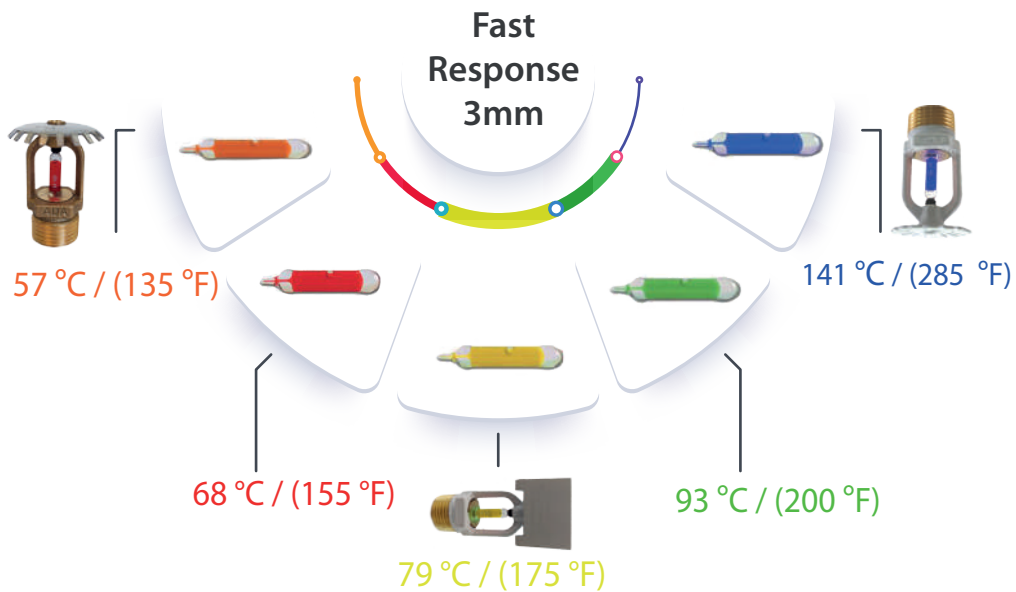
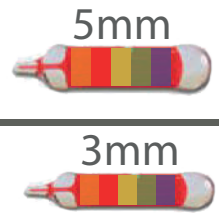
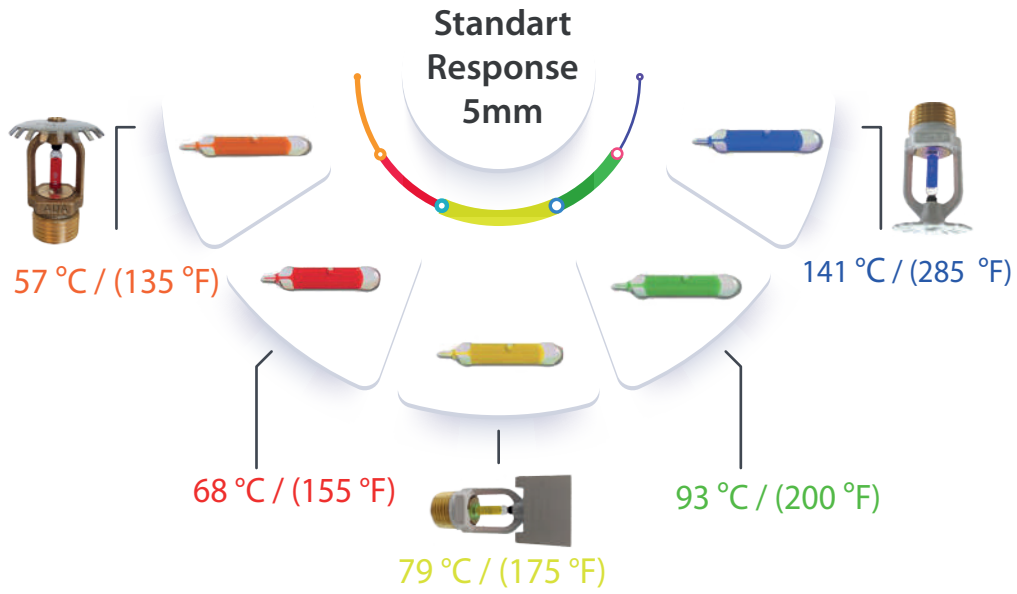
SPRINKPROTECTION CAGE

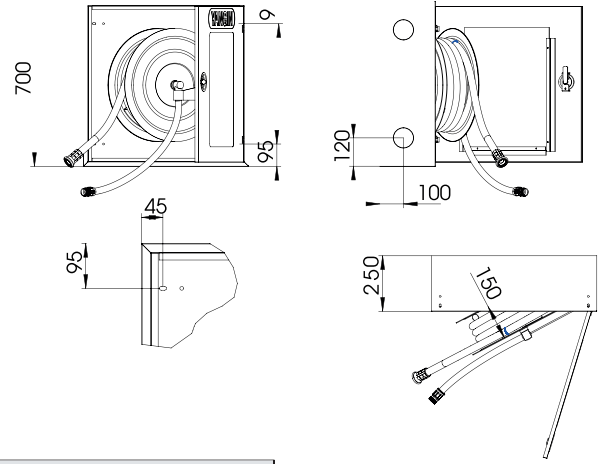


SPRINK INSTALLATION KIT



RESERVE SPRINK BOX





Fire Hose Cabinet

Rubber fire hose cabinets suitable for indoor use, at TS EN 671-2 standards, CE approved and half cloth reinforced. Fire cabinets which have become obligatory in many buildings we constructed will provide protection against damages at maximum level.

Mounted (Built-in) or Surface Mounted

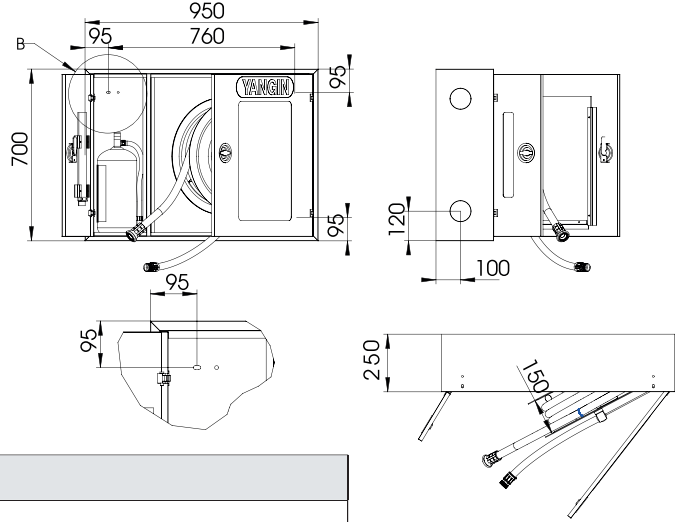
- Fire cabinets in measures 70x95x25 cm and vertical type.
- Made of DKP 1.00 mm sheet in a single piece, galvanized against corrosion. Internal and external parts are painted with electrostatic powder paint. Outer frame in a single piece is covered with glass.
- 6 kg dry chemical powder, in compliance with the class A,B,C (TS 862 EN 3-7+A1 and CE) and has the capacity to take fire extinguisher.
- There are Ø63 water inlet holes which allow for water installation connections in different directions in corners of the case.
- It is cased allowing right or left mounting of reels.
- In surface mounted cases, there are 4 pieces wall mounting holes which facilitate wall mounting.
- Fire cabinet is turning on/off with push-pull, manufactured in accordance with EN 671-2 and ISO 7010 warning marking standards.
- Can be painted with RAL 3002 (Red) or RAL 9001 (White) Electrostatic powder paint. Glass can be made in desired colour.
- Fire cabinets are manufactured by using first-class materials.
- Delivered to the consumer with a protective package.
- All fire cabinets are tested before packing.

Interior Materials

- DN50 (2") German type brass fire valve
- DKP sheet hose reels made of brass in 270° water lines, and water feed from body
- DN25 (1") diameter rubber fire hose with 20 meter of half cloth reinforced
- Operating Pressure: 12 Bar / Test Pressure: 18 Bar / Explosion Pressure: 30 Bar According to EN 694 Standards
- DN25 (1") diameter Jet-Spray-Off nozzle
- Instruction of use on reels arm

Optional

4 mm tampered smoked glass may be applied to the surface mounted and mounted (built-in) fire cabinets.
Pressure-reducing valve may be added.
DN50 (2") fire valve may be added.
DN25 (1") diameter rubber fire hose with 30 meter of half cloth reinforced may be manufactured.



Fire Hose Cabinet

Rubber fire hose cabinets suitable for indoor use, at TS EN 671-2 standards, CE approved and half cloth reinforced. Fire cabinets which have become obligatory in many buildings we constructed will provide protection against damages at maximum level.

Mounted (Built-in) or Surface Mounted

- Fire cabinets in measures 70x70x25 cm
- Made of DKP 1.00 mm sheet in a single piece, galvanized against corrosion. Internal and external parts are painted with electrostatic powder paint.
- There are Ø63 water inlet holes which allow for water installation connections in different directions in corners of the case.
- It is cased allowing right or left mounting of reels.
- In surface mounted cases, there are 4 pieces wall mounting holes which facilitate wall mounting.
- Hold-open door handle is made of Chrome / Nickel / Stainless and manufactured in accordance with EN 671-2 and ISO 7010 warning marking standards.
- Can be painted with RAL 3002 (Red) or RAL 9001 (White) Electrostatic powder paint.
- Fire cabinets are manufactured by using first-class materials.
- Delivered to the consumer with a protective package.
- All fire cabinets are tested before packing.

Interior Materials

- DN50 (2") German type brass fire valve
- DKP sheet hose reels made of brass in 270° water lines, and water feed from body
- DN25 (1") diameter rubber fire hose with 20 meter of half cloth reinforced
- Operating Pressure: 12 Bar / Test Pressure: 18 Bar / Explosion Pressure: 30 Bar According to EN 694 Standards
- DN25 (1") diameter Jet-Spray-Off nozzle
- Instruction of use on reels arm

Optional

4 mm tampered smoked glass may be applied to the surface mounted and mounted (built-in) fire cabinets.
 Pressure-reducing valve may be added.
 DN50 (2") fire valve may be added.
 DN25 (1") diameter rubber fire hose with 30 meter of half cloth reinforced may be manufactured.



Fire Hose Cabinet

Rubber fire hose cabinets suitable for indoor use, at TS EN 671-2 standards, CE approved and half cloth reinforced. Fire cabinets which have become obligatory in many buildings we constructed will provide protection against damages at maximum level.

Mounted (Built-in) or Surface Mounted

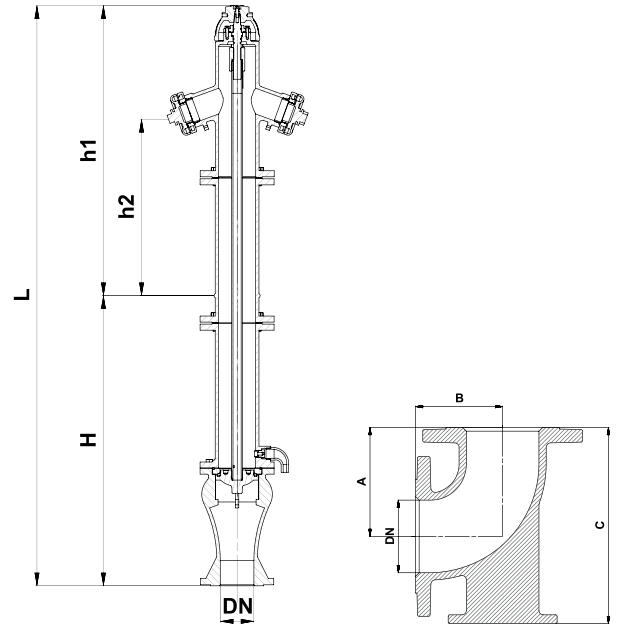
- Fire cabinets in measures 70x95x25 cm
- Made of DKP 1.00 mm sheet in a single piece, galvanized against corrosion. Internal and external parts are painted with electrostatic powder paint.
- 6 kg dry chemical powder, in compliance with the class A,B,C (TS 862 EN 3-7+A1 and CE) and has the capacity to take fire extinguisher.
- There are Ø63 water inlet holes which allow for water installation connections in different directions in corners of the case.
- It is cased allowing right or left mounting of reels.
- In surface mounted cases, there are 4 pieces wall mounting holes which facilitate wall mounting.
- Hold-open door handle is made of Chrome / Nickel / Stainless and manufactured in accordance with EN 671-2 and ISO 7010 warning marking standards.
- Can be painted with RAL 3002 (Red) or RAL 9001 (White) Electrostatic powder paint.
- Fire cabinets are manufactured by using first-class materials.
- Delivered to the consumer with a protective package.
- All fire cabinets are tested before packing.

Interior Materials

- DN50 (2") German type brass fire valve
- DKP sheet hose reels made of brass in 270° water lines, and water feed from body
- DN25 (1") diameter rubber fire hose with 20 meter of half cloth reinforced
- Operating Pressure: 12 Bar / Test Pressure: 18 Bar / Explosion Pressure: 30 Bar According to EN 694 Standards
- DN25 (1") diameter Jet-Spray-Off nozzle
- Instruction of use on reels arm

Optional

4 mm tempered smoked glass may be applied to the surface mounted and mounted (built-in) fire cabinets.
 Pressure-reducing valve may be added.
 DN50 (2") fire valve may be added.
 DN25 (1") diameter rubber fire hose with 30 meter of half cloth reinforced may be manufactured.



General Specifications

Working Temperature : -10....+120 °C

(16 Bar)

Standards

Design : TS EN 14384

Thread Standard : TS EN 1092-2 (PN16)

Tests : TS EN 12266-1

Applications

Fire installations

Material Specifications

Part Name	Material
Body	GG-25 / Cast Iron (EN GJL 250) GGG-40.3 / Ductile Iron (EN GJS 400-15)
Lower Pipe	GG-25 / Cast Iron (EN GJL 250) GGG-40.3 / Ductile Iron (EN GJS 400-15)
Upper Pipe	GG-25 / Cast Iron (EN GJL 250) GGG-40.3 / Ductile Iron (EN GJS 400-15)
Coupling	Aluminum Alloy
Handwheel	GG-25 / Cast Iron (EN GJL 250) GGG-40.3 / Ductile Iron (EN GJS 400-15)
Seat Seal	GGG-40.3 Ductile Iron + Rubber Coated
Check Valve	CuZn40Pb2 - CW617N - Brass
Upper Shaft	Stainless Steel
Shaft Motion Pipe	Galvanized Steel or Stainless Steel Pipe

Dimensions	Nominal Pressure	16 Bar	
	DN	80	100
	h1	745 mm	745 mm
	h2	550 mm	550 mm
	H	695 mm	695 mm
		1040 mm	1040 mm
	L	1450 mm	1450 mm
		1700 mm	1700 mm
	Outlet Dimension	2 x 50	2 x 65
	Flow Cut Systems	Dry Type	
Elbow	Flowrate (m³ / h)	120	210
	A	180	150
	B	180	120
	C	284	270

Fire Hose

Fire hoses are used for a range of closed end washdown, standby fire prevention, or fire attack use - consult local fire houses for any required approvals. A lower cost, single jacket emergency standby fire prevention hose is typically for a single use and not designed to be dragged, driven over, or for general washdown use. For washdown or repetitive use, refer to a hose with a "double jacket" or a rubber construction. We also stock a wide range of fire hose fittings, nozzles, reels, valves, wrenches, and even protective ramps or hose bridges in applications where vehicles must cross lines.

WHITE FIRE HOSE

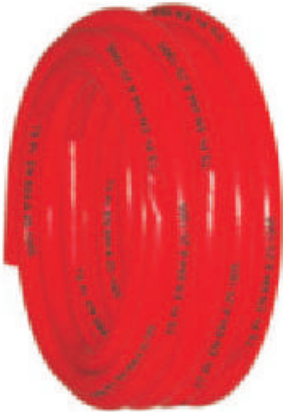
Insulated fire hose designed for professional and voluntary fire brigades and for transport of water with admixture in industry, agriculture, etc. It can be used at temperatures from -30°C to +70°C. It is marked by three colour stripes: blue-red-blue. The outside colour of the polyester yarn is white, the inside rubber liner is black. The hose is certified to EN 1924-1.



Highly abrasion-resistant hose, strong, durable and resistant to oils, petrol and a wide range of chemicals. It is designed for professional and volunteer fire brigades, chemical industry, refineries and agriculture. The hose is made of high strength polyester fibre (reinforcement), set in high quality, special-made, synthetic rubber based on nitrile / PVC extruded through the polyester fabric. It can be used at temperatures from -40 to +100 °C. Resistant to UV radiation and ozone. Colour of the hose is red.



SEMI-HARD FIRE HOSE



Made of semi-hard rubber material

No drying is required after use.

It is suitable for use in water system fire cabinets and mobile reels.

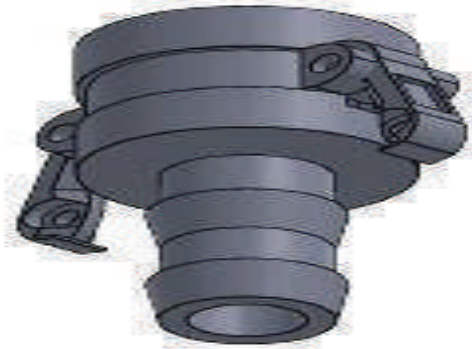
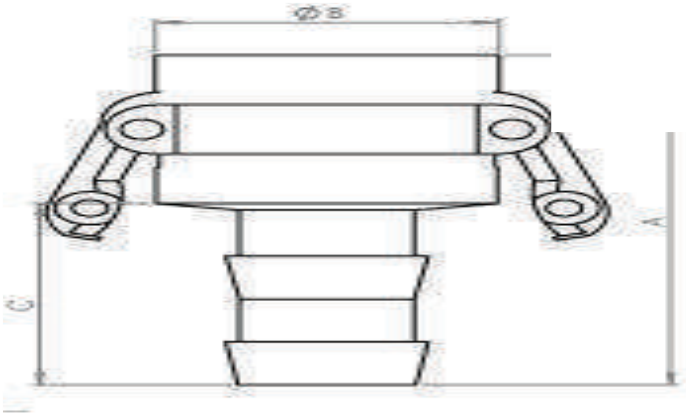
Working pressure : 12 Bar

Test pressure: 18 Bar

Burst pressure : 30 Bar

General Specifications and Areas of Use

They are quick connector heads of hoses used in fuel tankers, land / sea tankers, filling and discharging operations. There are camlock types according to connection type and intended use. Aluminum camlock hose couplings make simple connection and disconnection process of PVC suction, discharge hoses and industrial agriculture, construction and industrial hoses. They are used in the transfer of water, hydraulic oil, cooling water, gasoline and petroleum products.



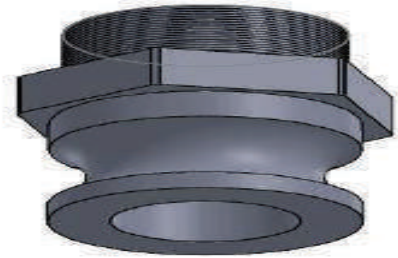
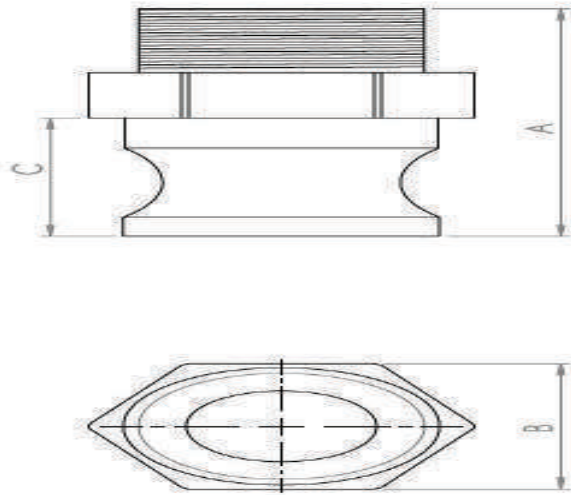
LINE NO	NOMINAL SIZE	DN	A	B	C	WEIGHT (GR)
1	1/2	15	77	34	42	89
2	3/4	20	83	43	47	115
3	1	25	100	48	55	175
4	1 1/4	32	109	59	58	285
5	1 1/2	40	107	67	58	337
6	2	50	119	78	65	368
7	2 1/2	65	131	92	70	514
8	3	80	157	107	93	730
9	4	100	176	142	105	1551

General Specifications and Areas of Use

They are quick connector heads of hoses used in fuel tankers, land / sea tankers, filling and discharging operations. There are camlock types according to connection type and intended use.

Aluminum camlock hose couplings make simple connection and disconnection process of PVC suction, discharge hoses and industrial agriculture, construction and industrial hoses. They are used in the transfer of water, hydraulic oil, cooling water, gasoline and petroleum products.

Type B aluminum camlock coupler is normally used with Type F adapter; but it may be used in A and E type adaptors and with DP in the same size. The aluminum camlock allows the hose to be connected and disconnected with a snap; and prevents the problematic operation of the thread, flange.

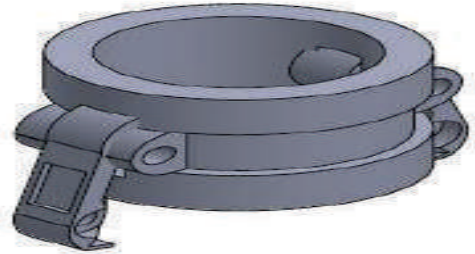
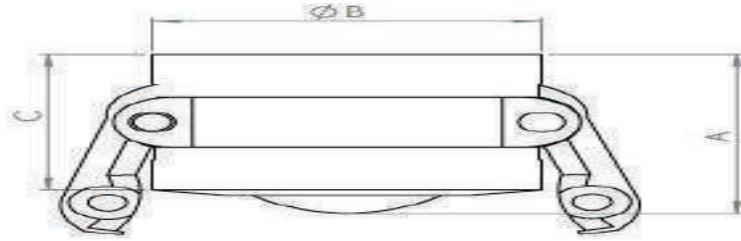


LINE NO	NOMINAL SIZE	DN	A	B	C	WEIGHT (GR)
1	1/2	15	54	27	27	31
2	3/4	20	58	34	30	60
3	1	25	70,5	39	37	94
4	1 1/4	32	79	48	42	145
5	1 1/2	40	80	57	42	180
6	2	50	87	67	48,5	231
7	2 1/2	65	102,5	80,5	53	431
8	3	80	111,5	94,5	55	633
9	4	100	110,5	122,5	54	1001

General Specifications and Areas of Use

They are quick connector heads of hoses used in fuel tankers, land / sea tankers, filling and discharging operations. There are camlock types according to connection type and intended use.

Aluminum camlock hose couplings make simple connection and disconnection process of PVC suction, discharge hoses and industrial agriculture, construction and industrial hoses. They are used in the transfer of water, hydraulic oil, cooling water, gasoline and petroleum products.



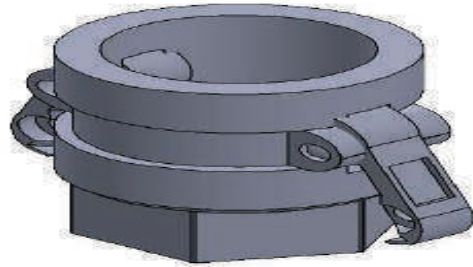
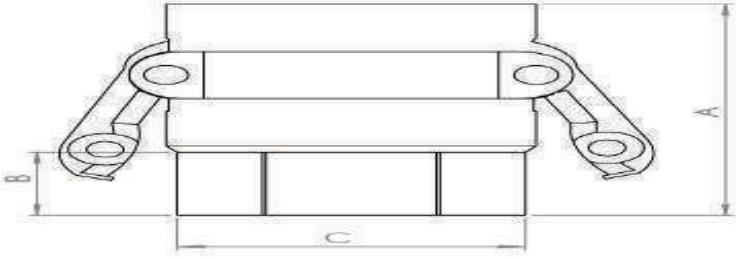
LINE NO	NOMINAL SIZE	DN	A	B	C	WEIGHT (GR)
1	1/2	15	40	33,5	33	80
2	3/4	20	50	43	38	123
3	1	25	49	49,5	40	141
4	1 1/4	32	58	60	47	273
5	1 1/2	40	63	67,5	50	334
6	2	50	68	80	52	382
7	2 1/2	65	75	92	55	454
8	3	80	78	107	58	559
9	4	100	83	143	63	1209

General Specifications and Areas of Use

They are quick connector heads of hoses used in fuel tankers, land / sea tankers, filling and discharging operations. There are camlock types according to connection type and intended use.

Aluminum camlock hose couplings make simple connection and disconnection process of PVC suction, discharge hoses and industrial agriculture, construction and industrial hoses. They are used in the transfer of water, hydraulic oil, cooling water, gasoline and petroleum products.

D Type camlock is normally used at A type adapters, but it may be used in E and F type adaptors and with DP in the same size.

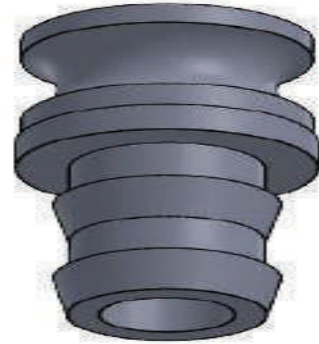
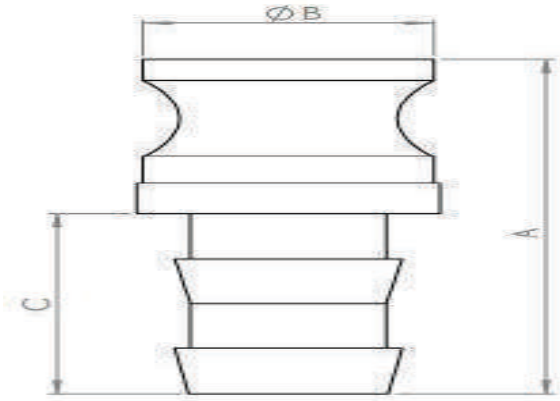


LINE NO	NOMINAL SIZE	DN	A	B	C	WEIGHT (GR)
1	1/2	15	49,5	15	27	87
2	3/4	20	55	20	32	110
3	1	25	67	19	41	166
4	1 1/4	32	68	20	51	293
5	1 1/2	40	68	18	55	301
6	2	50	75	21	67	364
7	2 1/2	65	85	23	81	455
8	3	80	80	21	94	503
9	4	100	95	28	124	1205

General Specifications and Areas of Use

They are quick connector heads of hoses used in fuel tankers, land / sea tankers, filling and discharging operations. There are camlock types according to connection type and intended use.

Aluminum camlock hose couplings make simple connection and disconnection process of PVC suction, discharge hoses and industrial agriculture, construction and industrial hoses. They are used in the transfer of water, hydraulic oil, cooling water, gasoline and petroleum products.

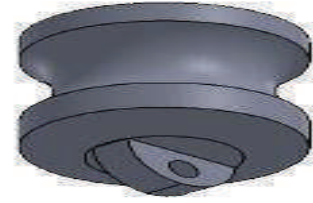
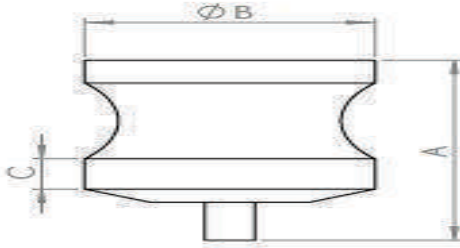


LINE NO	NOMINAL SIZE	DN	A	B	C	WEIGHT (GR)
1	1/2	15	73	24	39	34
2	3/4	20	87,5	32	48	76
3	1	25	92,5	36,5	48	91
4	1 1/4	32	110	45	59	150
5	1 1/2	40	111	53,5	60	213
6	2	50	125	63	64	294
7	2 1/2	65	131	75,5	68,5	432
8	3	80	158	91	94	736
9	4	100	177	119,5	105	1179

General Specifications and Areas of Use

They are quick connector heads of hoses used in fuel tankers, land / sea tankers, filling and discharging operations. There are camlock types according to connection type and intended use.

Aluminum camlock hose couplings make simple connection and disconnection process of PVC suction, discharge hoses and industrial agriculture, construction and industrial hoses. They are used in the transfer of water, hydraulic oil, cooling water, gasoline and petroleum products.

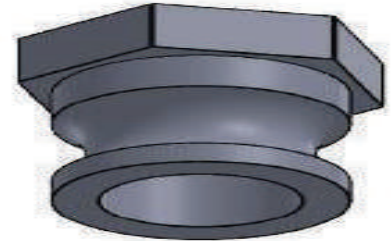
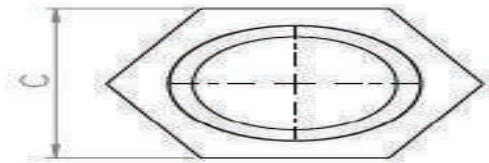
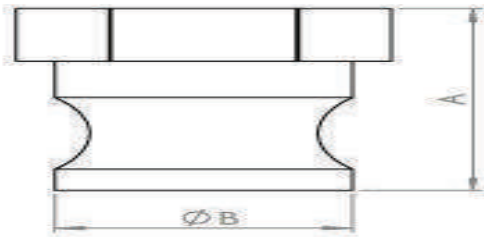


LINE NO	NOMINAL SIZE	DN	A	B	C	WEIGHT (GR)
1	1/2	15	35	24	10	23,5
2	3/4	20	36	32	7,5	48
3	1	25	46	36,5	9	61
4	1 1/4	32	50	45,5	13	91
5	1 1/2	40	56	53,5	20	145
6	2	50	62	63	15	175
7	2 1/2	65	70	75,5	18,5	306
8	3	80	80	91	25	416
9	4	100	83	119,5	25	773

General Specifications and Areas of Use

They are quick connector heads of hoses used in fuel tankers, land / sea tankers, filling and discharging operations. There are camlock types according to connection type and intended use.

Aluminum camlock hose couplings make simple connection and disconnection process of PVC suction, discharge hoses and industrial agriculture, construction and industrial hoses. They are used in the transfer of water, hydraulic oil, cooling water, gasoline and petroleum products.

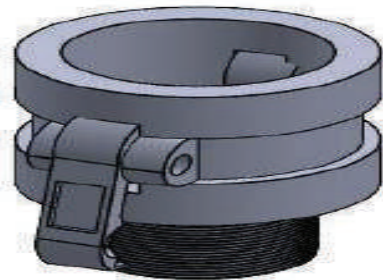
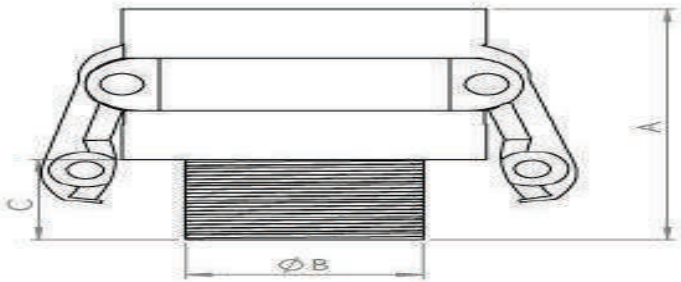


LINE NO	NOMINAL SIZE	DN	A	B	C	WEIGHT (GR)
1	1/2	15	36	24	27	20,5
2	3/4	20	41	32	34	38
3	1	25	49,5	36,5	40	52
4	1 1/4	32	61	45,5	52	112
5	1 1/2	40	62	53,5	57	134
6	2	50	71	63	66	171
7	2 1/2	65	74	76	83,5	280
8	3	80	76,5	91	100	381
9	4	100	75	119	128,5	639

General Specifications and Areas of Use

They are quick connector heads of hoses used in fuel tankers, land / sea tankers, filling and discharging operations. There are camlock types according to connection type and intended use.

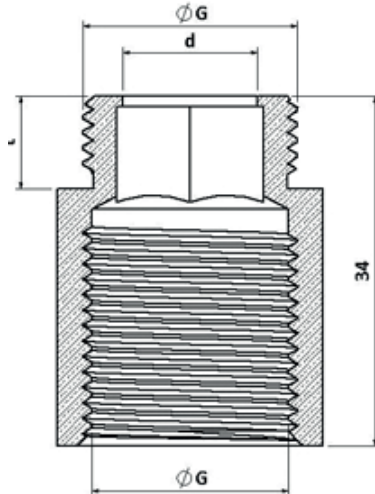
Aluminum camlock hose couplings make simple connection and disconnection process of PVC suction, discharge hoses and industrial agriculture, construction and industrial hoses. They are used in the transfer of water, hydraulic oil, cooling water, gasoline and petroleum products.



LINE NO	NOMINAL SIZE	DN	A	B	C	WEIGHT (GR)
1	1/2	15	50	20,5	16	78
2	3/4	20	55	25,5	18	104
3	1	25	67	32,5	23	159
4	1 1/4	32	70	41,5	22	260
5	1 1/2	40	74	47,5	24	306
6	2	50	78	59	25	368
7	2 1/2	65	81,5	74,5	23	446
8	3	80	86	87,5	25	572
9	4	100	98	112,5	33	1238



Clour	Crom
Material	Yellow metal



Used in chrome extension, intermediate tap and tap extensions,
It is a long-lasting plumbing connection piece with chrome plating.



Güneş
Enerji Rakoru



Sarı
Saat Rakoru



Sarı
Manşon



Sarı
Te



Sarı
Konik Rakor



Sarı
Depo Rakoru



Sarı
Dirsek



Sarı
Kuyruklu Dirsek



Orantılı
Nipel



Nipel



Sarı
Ye



Otomatik
Rakor



5 Yollu
Te



Osmanlı
Musluğu

Blank lined area for text entry.

[illegible]



Adasan, 30 yılı aşkın süredir sarı fittings çekvalf ve yangın mamülleri üzerine üretim tecrübesine sahiptir.

Adasan holds the production experience of flexible connection parts at various types and customized designs for the industry for three decades.

ADA AVCIOĞULLARI®
PRES DÖKÜM SU ARMATÜRLERİ SAN. ve TİC. LTD. ŞTİ.

Yenidoğan Mah. Abdi İpekçi Cad. Zorlu Sok. No:29
Bayrampaşa / İSTANBUL
Tel: 0212 237 87 23 Fax: 0212 558 93 74
Cep: 0532 132 41 94

www.adapres.com - www.yanginvanasi.com
adacekvalf@hotmail.com - info@adapres.com

